

MANIFEST v46



NUDE 2 | **Seeing Red (Nose)** works by Chris Sickels

MANIFEST

CREATIVE RESEARCH GALLERY
AND DRAWING CENTER

volume 46

NUDE 2

Seeing Red (Nose)

Works by Chris Sickels

MANIFEST is a 501(c)(3) non-profit organization

MANIFEST VOLUME FORTY-SIX

© 2010 MANIFEST PRESS

All rights reserved. No part of this publication may be reproduced in any way without written permission from the publisher. All rights in each work reproduced herein are retained by the artist/author.

Manifest Creative Research Gallery and Drawing Center

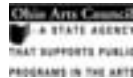
2727 Woodburn Avenue, P.O. Box 6218, Cincinnati, OH 45206
(513) 861-3638

First Printing - July 2010
Designed by Jason Franz
Printed by PrintPelican.com

Cover image by Melissa Hall
Back cover image by Chris Sickels

THANK YOU!

Manifest's 2009-2010 season
is supported by funding from:



FineArtsFund



NUDE 2



July 9 - August 6, 2010

Curated by Jason Franz

Ami Badami

Ken Landon Buck

Nora Daniel

Thomasin Dewhurst

Valerie Escobedo

Melissa Hall

Marshall Harris

James Keul

Daniel Maidman

Douglas Malone

William McMahan

Douglas Prince

Michael Reedy

Matthew Schenk


Christine Schirmer

Benjamin Shamback

Kendric Tonn

Donna Wilson

Christine Wuenschel



In honor of all we really are - the corporeal earthly object.

We all have one. When it comes into existence we're born. And when it ceases to be a unified whole, we die. Its natural state is nude, and always in motion. While there are certainly streams of thought that suggest that a person is more than their body, that identity and existence as a human includes things such as the spirit and mind, few would argue that the body is not at least a prerequisite. It is, after all, what gives context to the other aspects of being, and links us irrevocably to this Earth. NUDE is our celebration of the artist's view of humanity's least common denominator, and a tribute to *being*.

Manifest exhibits many kinds of works, from the most conceptual and experimental to more traditional. In fact we think it's important to have such a range in our repertoire. In our Drawing Center Studio we provide opportunities and instruction to professionals and students to study life-drawing. Although our studio is not limited to working just from the nude model, it is a core component in our curriculum, and our flagship studio offering.

So a year ago we asked ourselves - why not add another annual exhibit to our roster, this one dedicated to works that in some way depict, explore, or address the human nude form? The first exhibit turned out to be an amazing success, attracting more visitors to the gallery than any prior exhibit in Manifest's then five year history.

Therefore this year we were excited to renew our invitation to artists to submit works in any media, of any style or genre, (abstract, conceptual, highly realistic, etc.), and of any size, for consideration in Manifest's second annual NUDE, an international competitive exhibit exploring the uncovered human form in current art.

For this exhibit 270 artists from 41 states and 11 countries submitted 675 works for consideration. Twenty-five works by these 19 artists were selected by a very rigorous multi-member jury process for presentation in the gallery and catalog. Coincidentally, NUDE 2 features an unusually high proportion of tri-state artists, with 8 of the exhibitors living and working within Ohio, Kentucky, or Indiana. Fourteen of the artists are new exhibitors at Manifest.

Ami Badami

Northampton, Pennsylvania

Tina

pencil, 16" x 12", 2008



Ken Landon Buck
Highland Heights, Kentucky

Seclusion
pastel on paper, 31.5" x 39.5", 2003



Chicken Fat

oil on linen on panel, 9" x 11", 2003



Nora Daniel
Zanesville, Ohio

Literary Pursuits
oil on linen, 26" x 30", 2003



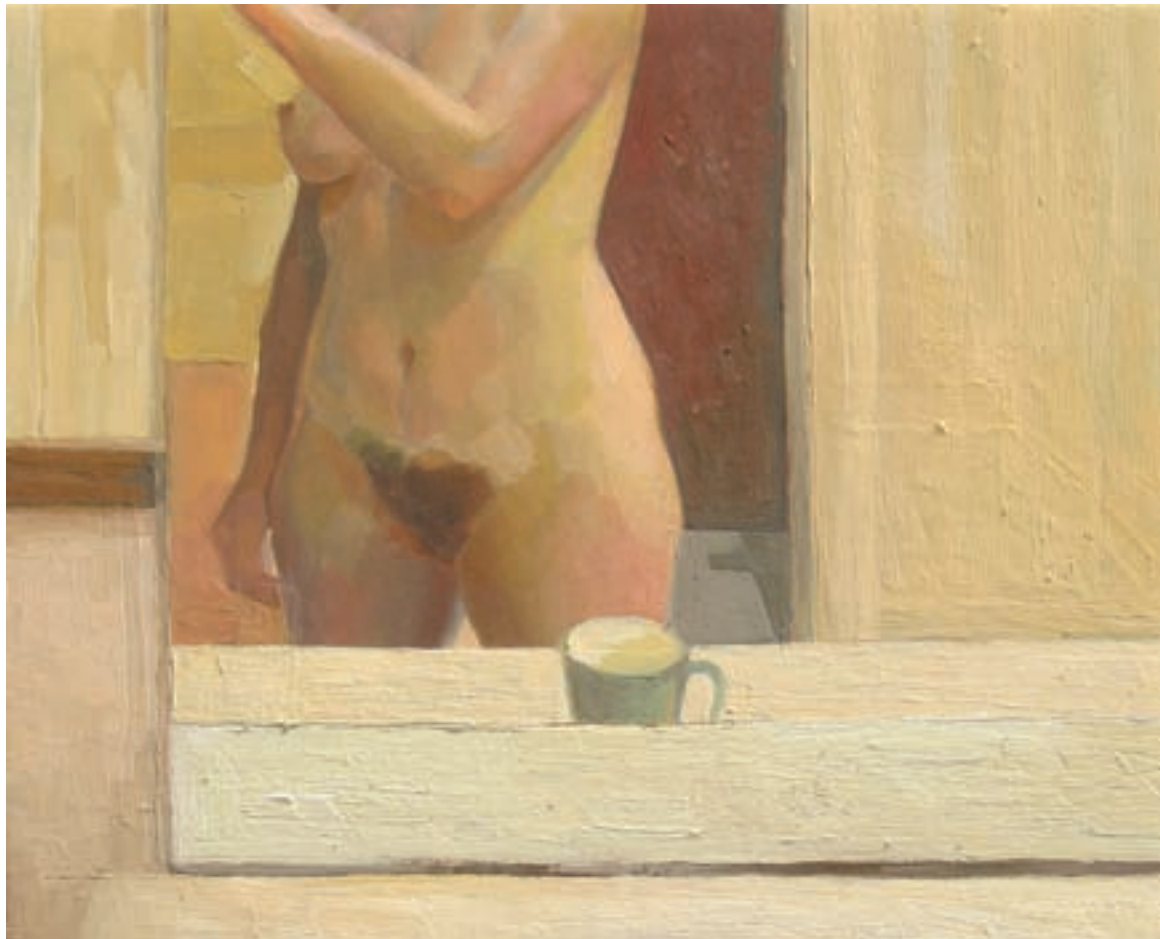
Thomasin Dewhurst
Livermore, California

Sleep
watercolor on paper, 10" x 12", 2010



Valerie Escobedo
Findlay, Ohio

Morning Reflection
oil on canvas, 8" x 10" x 2", 2010



Melissa Hall
Lexington, Kentucky

Tropicanna
digital photography, 13" x 19", 2005



Marshall Harris
Williamsport, Pennsylvania

The last time I felt normal
graphite on Mylar, 29" x 20.5", 2010



James Keul
New York, New York

Elizabeth
oil on canvas, 36" x 30" x 3", 2010



Daniel Maidman
Brooklyn, New York

Red
oil on canvas, 60" x 36" x 1.5", 2009



Arrangement with Figure #2
oil on canvas, 30" x 24" x 1", 2006



Douglas Malone
Royal Oak, Michigan

Arrangement with Model
oil on canvas, 24" x 18" x 1", 2009





Douglas Malone
Royal Oak, Michigan

Convocation 2
oil on canvas, 30" x 36" x 1", 2009



William McMahan
Martinsville, Indiana

Figure Study (9)
drypoint on copper, 24" x 18", 2010



Douglas Prince
Portsmouth, New Hampshire

Anatomical Displacements-08
digital print, 9.6" x 12", 2009



Anatomical Displacements-09

digital print, 9.6" x 12", 2009



Anatomical Displacements-24
digital print, 9.6" x 12", 2009



by 35

oil on panel, 39" x 25", 2010



Michael Reedy
Ann Arbor, Michigan

69, possibly 80
oil on panel, 35" x 23", 2009



Matthew Schenk
Grand Rapids, Michigan

Figure 241 (*Mia Too Close To The Edge*)
oil on canvas, 22" x 10", 2009



Christine Schirmer
Cincinnati, Ohio

Disjointed
photograph: inkjet print, 18" x 12", 2010



Benjamin Shamback
Mobile, Alabama

Jay Posterior
charcoal and gouache, 30" x 22", 2009



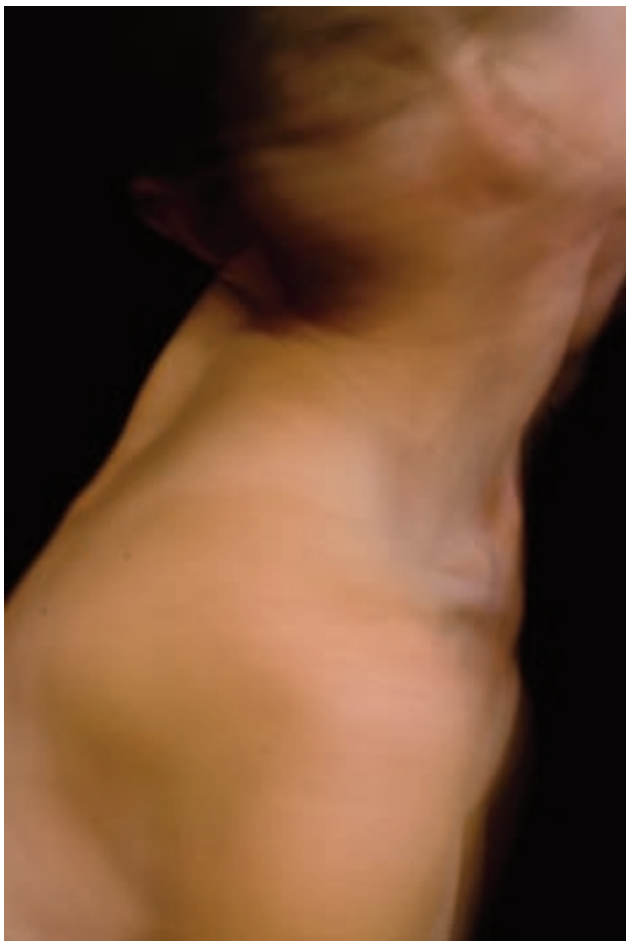
Kendric Tonn
Wooster, Ohio

Gea
chalk & charcoal on paper, 26" x 13", 2009



Donna Wilson
Roswell, New Mexico

Metamorphosis
archival inkjet print, 12" x 8", 2008



Christine Wuenschel
West Lafayette, Indiana

Waiting 1
charcoal on paper, 51" x 45", 2007



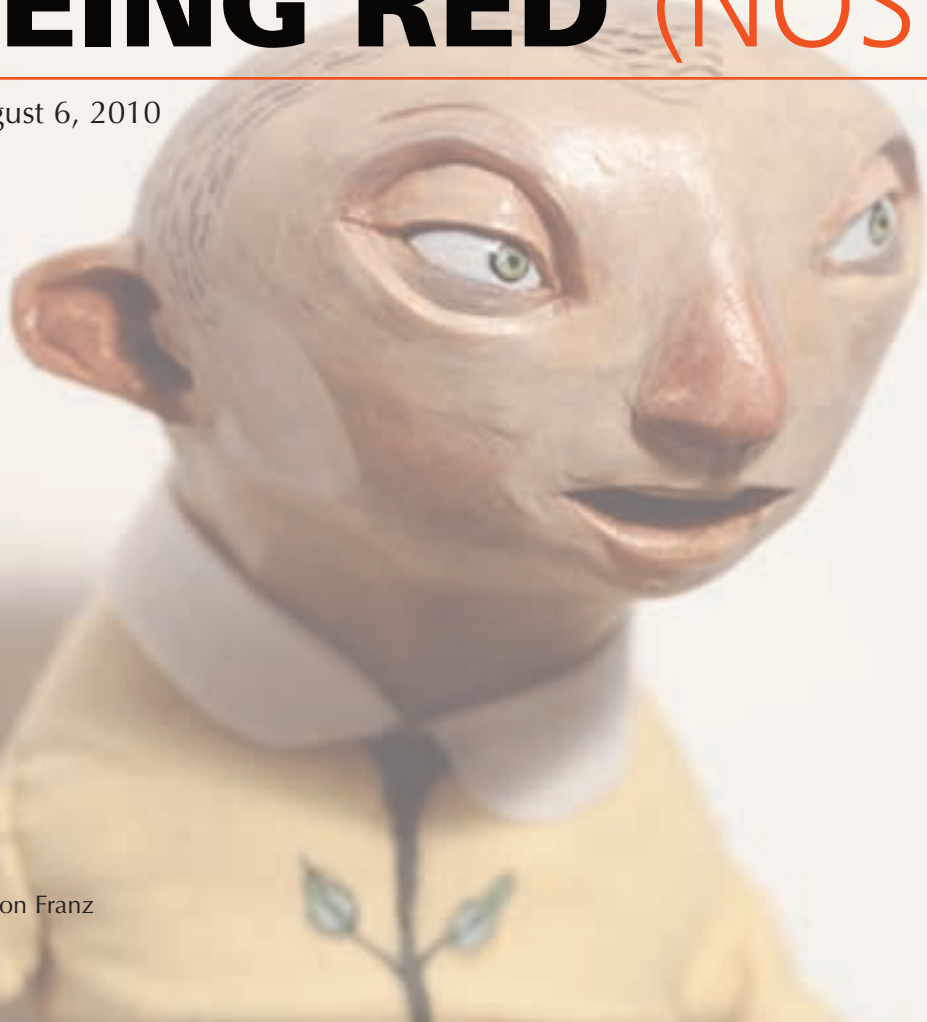




SEEING RED (NOSE)

July 9 - August 6, 2010

Curated by Jason Franz



Works by Chris Sickels



Manifest digs deep, exploring the gamut of visual arts. This exhibit adds to the gallery's history of such exhibits begun with *Transportation Design*, *The Drawthrough Collection* by Scott Roberston, and *Funny Men* which included works by noted illustrators Ryan Ostrander and Gabriel Utasi. The gallery is proud and delighted to host Chris Sickels of Red Nose Studio for a full spectrum look at his intense and highly unique illustrative process.

Seeing Red (Nose) features a start to finish range of works that lead to Sickels' stunning photographic images. Like artists such as Sandy Skoglund and the Brothers Quay, Sickels employs a painstaking process of crafting every element within each image as an object, then combining, manipulating, lighting and ultimately photographing them to arrive at dynamic and immersive photographic illustrations. The exhibit includes original sketch-books, hand-crafted sculptural models, finished photographic illustrations, and stop-motion animation featuring the compelling characters in haunting moving dramas.

Chris Sickels, the creative force behind Red Nose Studio, creates an eccentric world we'd all like to visit. Red Nose Studio's illustrations appear in advertising, magazines, books, newspapers, packaging, character development and animation. His work has been honored by virtually every award institution or annual and has been featured in



Little Things

mixed media, 5" x 6" x 5", 2009

HOW, Print, Creativity, Communication Arts and 3x3 Magazine. He has twice been honored with the Carol Anthony Grand Prize award from the Society of Illustrators 3-D Salon. Two of his short films, *The Red Thread Project* and *Innards*, were selected to screen at the 2005 and 2006 Los Angeles International Short Film Festival. He authored and illustrated *The Look Book* (available here), and has illustrated the children's book *Here Comes The Garbage Barge* released in February 2010.

Sickels' client list includes such notables as Target, Microsoft, Time magazine, New York Times, Wall Street Journal, United States Postal Service, Random House Books, AARP, and SMFB (Norway). He has lectured widely about Illustration and his creative process at such institutions as Ringling College of Art, Rhode Island School of Design (RISD), University of Southern Indiana, Parkland College, Savannah College of Art and Design, Taylor University, as well as the HOW design conference in 2008 and ICON 4 conference in 2007.

Originally from Indiana, Sickels earned a BFA in Communication Arts with an emphasis in Illustration from The Art Academy of Cincinnati in 1996.



Give and Take

mixed media, 5" x 9" x 5", 2008



Smith
mixed media, 5" x 9" x 5", 2007



El Gallo

mixed media, 5" x 21" x 5", 2007



Henry
mixed media, 5" x 10" x 5", 2007



Ticket Taker

mixed media, 5" x 10" x 5", 2008

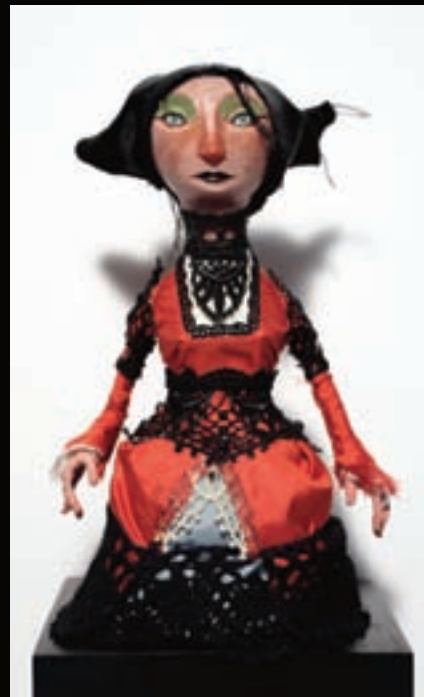


Bruja

mixed media, 5" x 10" x 5", 2007

Flight (right)

mixed media, 18" x 20" x 5", 2008







GadgetMan

mixed media, 5" x 14" x 5", 2007

Lazyhead & Sleepybones (right)

mixed media, 5" x 9" x 5", 2005







Roadie
mixed media, 5" x 9" x 5", 2008



Diablo

mixed media, 5" x 11" x 5", 2007



Goddess

mixed media, 5" x 10" x 5", 2007

Scout (right)

mixed media, 18" x 14" x 8", 2009





Elemi

archival print, 20" x 24", 2007



El Gallo
archival print, 17" x 20", 2007



Flight (left)
Polaroid, 13" x 11", 2008

Henry (right)
archival print, 17" x 20", 2007



Lazyhead & Sleepybones
polaroid, 8" x 9", 2005



Little Things
archival print, 32" x 28", 2009





Loyalty (left)
archival print, 27" x 23", 2007

Roadie (right)
archival print, 16" x 19", 2008





Scout (left)
archival print, 32" x 21", 2009

Looking Ahead (right)
archival print, 21" x 27", 2008





Ticket Taker
archival print, 27" x 23", 2008





mince





I am fascinated with the human face and its ability to say so much with such subtle changes. Trying to catch those subtleties are what drive me when I create my little worlds. The other driving force behind my characters is the



notion of searching for something. If the mystery is absent in my work I find that it isn't as strong. Sometimes the fewer questions I ask the better the work can be.

- Chris Sickels

About Manifest

Founded in May of 2004, Manifest Creative Research Gallery and Drawing Center is a 501(c)(3) non-profit arts organization headquartered in the urban neighborhood of East Walnut Hills in Cincinnati, Ohio. The elegant street level exhibition space is minutes away from downtown Cincinnati, and the numerous academic institutions of higher learning in the region. It is also within easy walking distance of a diversely populated historic neighborhood with residents from all walks of life. The galleries are free and open to the public five hours a day, five days a week, presenting works by students and professionals from around the world. The Manifest Drawing Center Studio is located in the nearby Walnut Hills Essex Studios Complex.

Manifest is supported by grants and public donations and has the goal to support student professionalism, integrate the arts into the urban residential community and raise the bar on artistic standards. The mission also includes the exploration of the relationship between art and design, as well as the ongoing support and display of drawing in all its various forms.

Mission

Manifest stands for the quality presentation, experience, and documentation of the visual arts, engaging students, professionals, and the public from around the world through accessible world-class exhibits, studio programs, and publications.

Manifest Gallery

...a neighborhood gallery for the world.

Manifest Press

...take every exhibit home.

Manifest Drawing Center Studio

...because learning to draw is learning to see.

Executive Director

Jason Franz

Assistant Director

Tim Parsley

Administrative Assistant

Joanna Vance

Gallery Assistant

Laura Fisher

Manifest Associates

Kristin Cullen

Kevin Munte

Trevor Ponder

Interns

Karen Brasier (Senior Intern)

Jase Flannery

Kathleen Harrison

Maria Lewis

Anna Martinovich (Senior Intern)

Austin Wieland

Bruno Zabaglio (Senior Intern)

Board of Directors

Christina Dakin

Jason Franz

Laura Fisher

Debbie Heuer

Brigid O'Kane







MANIFEST

CREATIVE RESEARCH GALLERY
AND DRAWING CENTER

2727 woodburn avenue cincinnati, ohio 45206
www.manifestgallery.org