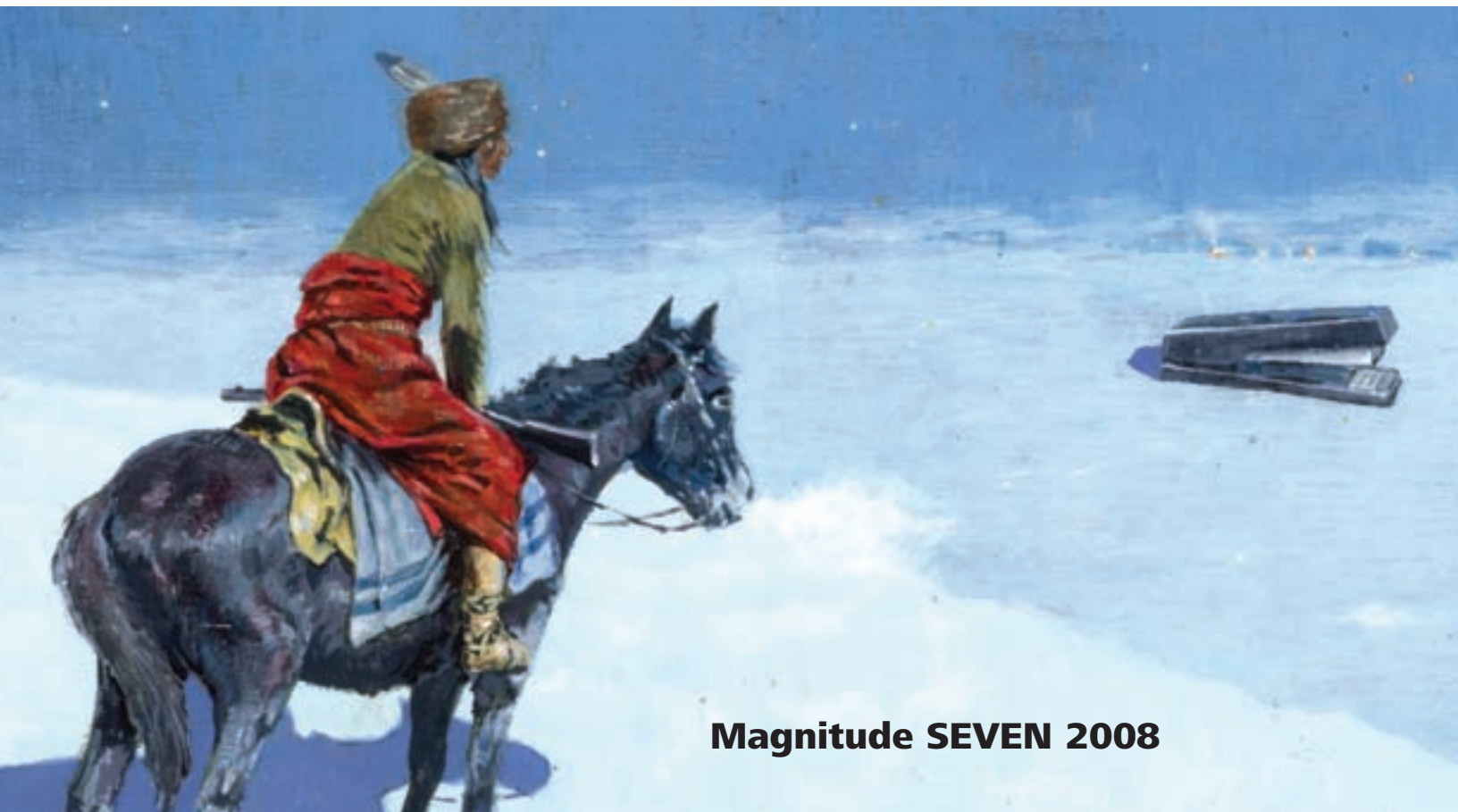


MANIFEST

v28



Magnitude SEVEN 2008

MANIFEST

CREATIVE RESEARCH GALLERY
AND DRAWING CENTER

volume 28

**4th Annual
Magnitude SEVEN**

MANIFEST is a 501(c)(3) non-profit organization

MANIFEST VOLUME TWENTY-EIGHT

© 2008 MANIFEST PRESS

All rights reserved. No part of this publication may be reproduced in any way without written permission from the publisher. All rights in each work reproduced herein are retained by the artist/author.

Manifest Creative Research Gallery and Drawing Center

2727 Woodburn Avenue, P.O. Box 6218, Cincinnati, OH 45206
(513) 861-3638

First Printing - June 2008

Designed by Jason Franz

Printed by PrintPelican.com

Cover image by Adam Mysock

Back cover image by Corey Ackelmire

Manifest is supported by funding from:



The NLT Foundation

The Greater Cincinnati Foundation

FineArtsFund



4th Annual Magnitude SEVEN

June 6 - July 3, 2008

Corey Ackelmire (Carbondale, Illinois)

Ulrika Andersson (Stockholm, Sweden)

Jason Baldwin (Starkville, Mississippi)

Deborah Bryan (Johnson City, Tennessee)

Charlie Buckley (Oxford, Ohio)

Andrew CopperSmith (Glen Ellyn, Illinois)

Antonio Darden (Duluth, Georgia)

Eileen Doktorski (Logan, Utah)

David Dotson (Oxford, Ohio)

Nathan Dube (Carbondale, Illinois)

Christine Elfman (Rochester, New York)

Craig Fisher (Toledo, Ohio)

Rachel Gillen (San Francisco, California)

Karla Hackenmiller (Athens, Ohio)

Jeffrey Hensley (Arlington, Virginia)

Yumiko Irei-Gokce (Inverness, Illinois)

Vanessa Irzyk (Jamaica Plain, Massachusetts)

Sun Kyoung Kim (Urbana, Illinois)

Mark Langeneckert (Columbia, Missouri)

Jeff Leake (Bowling Green, Kentucky)

Kirk Maggard (Carmel, Indiana)

Dan McAvey (Boston, Massachusetts)

Metra Mitchell (St. Louis, Missouri)

Adam Mysock (Cincinnati, Ohio)

Dane Patterson (Brooklyn, New York)

Brent Payne (Oxford, Ohio)

Amy Marie Regan (Manchester, New Hampshire)

June Roys (Joplin, Missouri)

Michelle Rozic (Nacogdoches, Texas)

Liliana Trinajstic (Dublin, Ireland)

Jovan Villalba (Long Island City, New York)

Lizabeth Whipps (Dayton, Ohio)

Josh Willis (Brooklyn, New York)

Lisa Wilson (Oxford, Ohio)

*Co-curated
ed by Jason Franz*

Small works are very portable and fit well into many spaces. They also evoke in the viewer a sense of one's own physicality, in a completely different way than average or large-sized works. Small works are intimate; inviting approach and inspection. Like short poetry, they are a challenge to craft with the same presence of their larger counterparts. For the fourth time, Manifest called to artists to submit works no larger than seven inches in any dimension for consideration by a six person jury, and our most popular exhibit year after year.

The call resulted in a record 550 submissions by 254 artists in 38 states and 13 different countries. This catalog documents the 51 works by 34 artists from the U.S., Ireland, and Sweden included in the exhibit at Manifest Gallery.



Corey Ackelmire (Carbondale, IL)

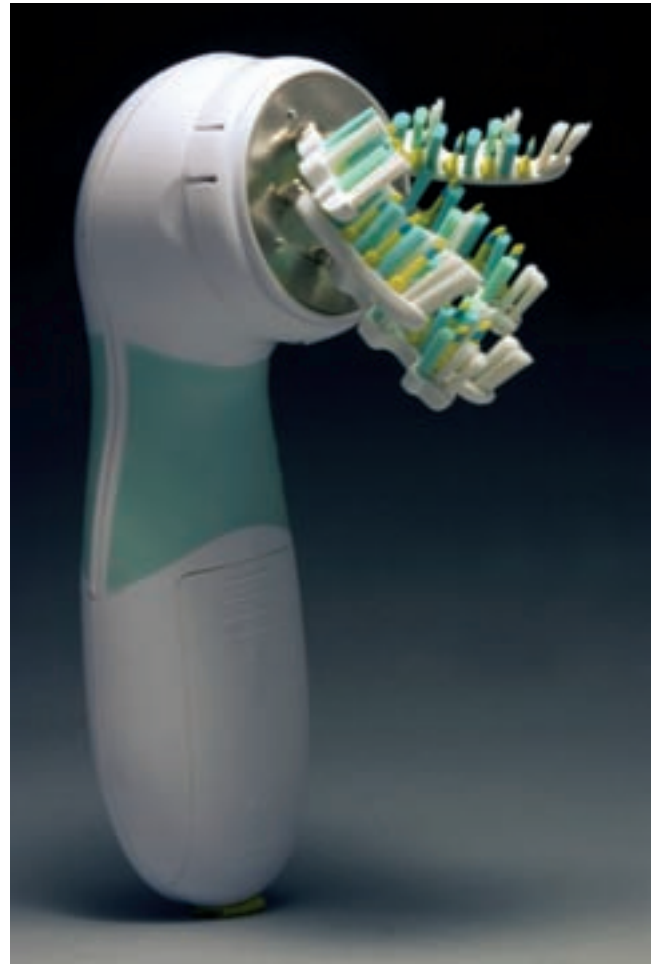
Rattle # 1, Face scrubber, toothbrushes, nickel, silver, 7" x 2" x 3", 2008





Corey Ackelmire (Carbondale, IL)

Rattle # 2, Vibrating flosser, toothbrushes, silver, 4" x 1.5" x .75", 2008



Corey Ackelmire (Carbondale, IL)

Rattle # 3, Face scrubber, toothbrushes, nickel, silver, 6" x 2" x 3", 2008



Ulrika Andersson (Stockholm, Sweden)

Distant Cities I, Acrylic and silk screen on paper, 6.7" x 6.7", 2008



Jason Baldwin (Starkville, MS)

Healing Machine, Archival inkjet print, 3" x 2.5", 2007



Deborah Bryan (Johnson City, TN)

Poplar Blossom, Intaglio with chine colle, 4" x 4", 2006



Deborah Bryan (Johnson City, TN)
Thistle, Intaglio with chine colle, 4" x 4", 2006



Charlie Buckley (Oxford, OH)

Mapping Events In and Around a Set of Keys, Oil and mixed media on construction paper, 7" x 7" x 1", 2008



Andrew CopperSmith (Glen Ellyn, IL)
1B, Acrylic on wood, 6.25" x 5.75" x 1", 2007



Antonio Darden (Duluth, GA)

If Looks Could Cake, Yellow Cake with Chocolate Frosting on Fiesta Ware, Cast bronze, string, pigment, 1.25" x 1.25" x 1.25", 2007



Antonio Darden (Duluth, GA)
Untitled, Fire extinguisher, metal, wood, 4" x 1.5" x 1.25", 2007



Eileen Doktorski (Logan, UT)
Denial, Cast bronze, 4.5" dia., 2007



Eileen Doktorski (Logan, UT)
Crumpled Page, Cast bronze, 2" x 2.5" x 2", 2007





David Dotson (Oxford, OH)
Scorpiopod, Copper, insect parts, steel, 1.5" x 2.75" x 2.75", 2006



David Dotson (Oxford, OH)

Scrubber Ant, Copper, hair, steel, insect parts, 1.25" x 2" x 2.75", 2006





Nathan Dube (Carbondale, IL)
A Boy, His Bike and the All-American Sport, Copper, miniature baseball card, rubber, 4.5" x 3.125" x 3", 2005



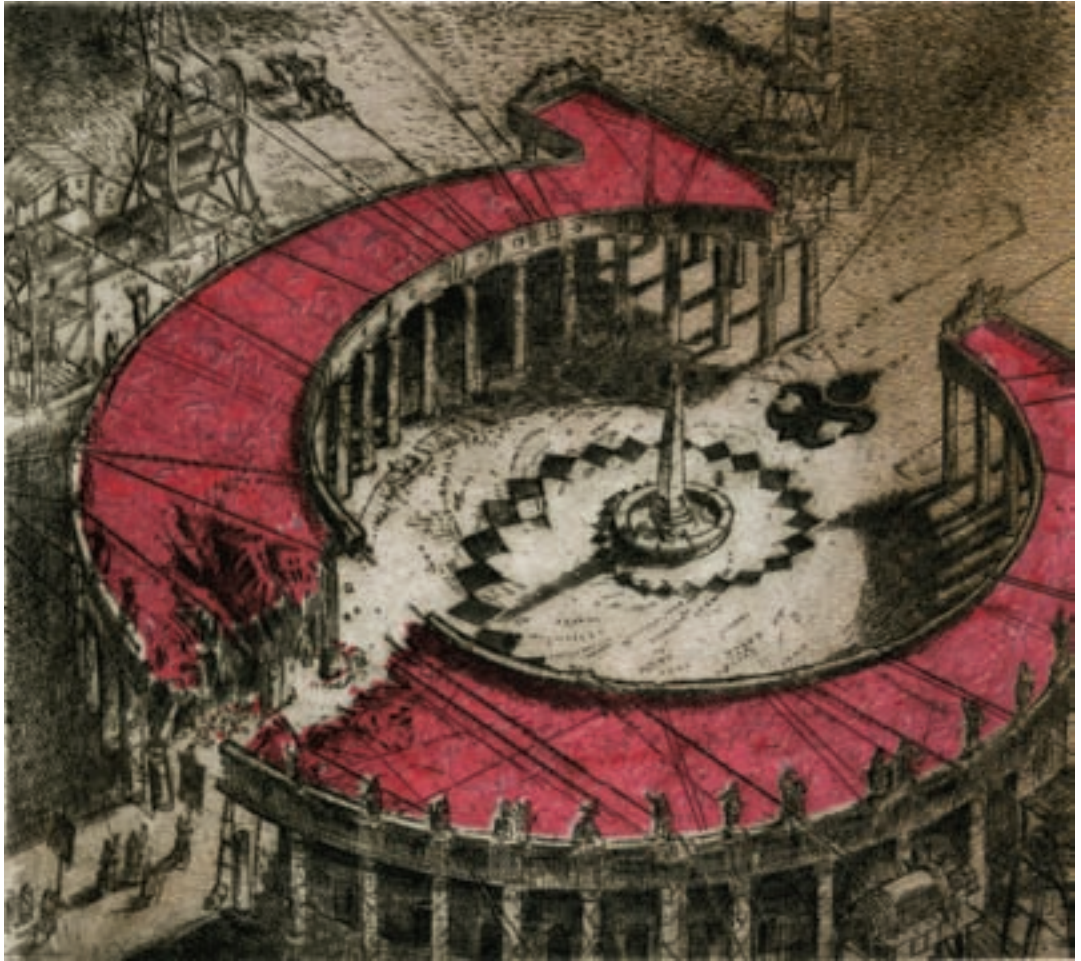


Christine Elfman (Rochester, NY)
Cabinet Cards I-III, Gold toned albumen print from wet-plate Collodion negative, mounted on cabinet card, 4.25" x 6.5", 2008



Craig Fisher (Toledo, OH)

Colossus of Roads, Intaglio over inkjet, 6" x 6.5", 2007



Craig Fisher (Toledo, OH)
Parting of the Red "C", Intaglio over inkjet, 6.5" x 6", 2007



Rachel Gillen (San Francisco, CA)
42nd and 5th, Oil on canvas, 6" x 6", 2008



Rachel Gillen (San Francisco, CA)
Trapped, Oil on canvas, 6" x 6", 2008



Karla Hackenmiller (Athens, OH)

Liminal Haze, Etching on blue Pesca, 7" x 7", 2007



Jeffrey Hensley (Arlington, VA)
Window View 4, Oil on paper, 7" x 7", 2008



Yumiko Irei-Gokce (Inverness, IL)

Embryonic Tree, Mixed media with monotype, collage, and drawing, 7" x 7", 2008



Vanessa Irzyk (Jamaica Plain, MA)
Bab's Said it Would Be Like That, Oil mounted on board, 3.5" x 3.5", 2008





Sun Kyoung Kim (Urbana, IL)
Between Two, Sterling Silver, 3" x 3" x 3", 2008



Mark Langeneckert (Columbia, MO)

Untitled Nude No. 3, Monotype, pastel, and guache, 3.25" x 4.5", 2008



Jeff Leake (Bowling Green, KY)
Weather Patterns fig. b, Oil on wood, 4" x 4", 2008



Kirk Maggard (Carmel, IN)

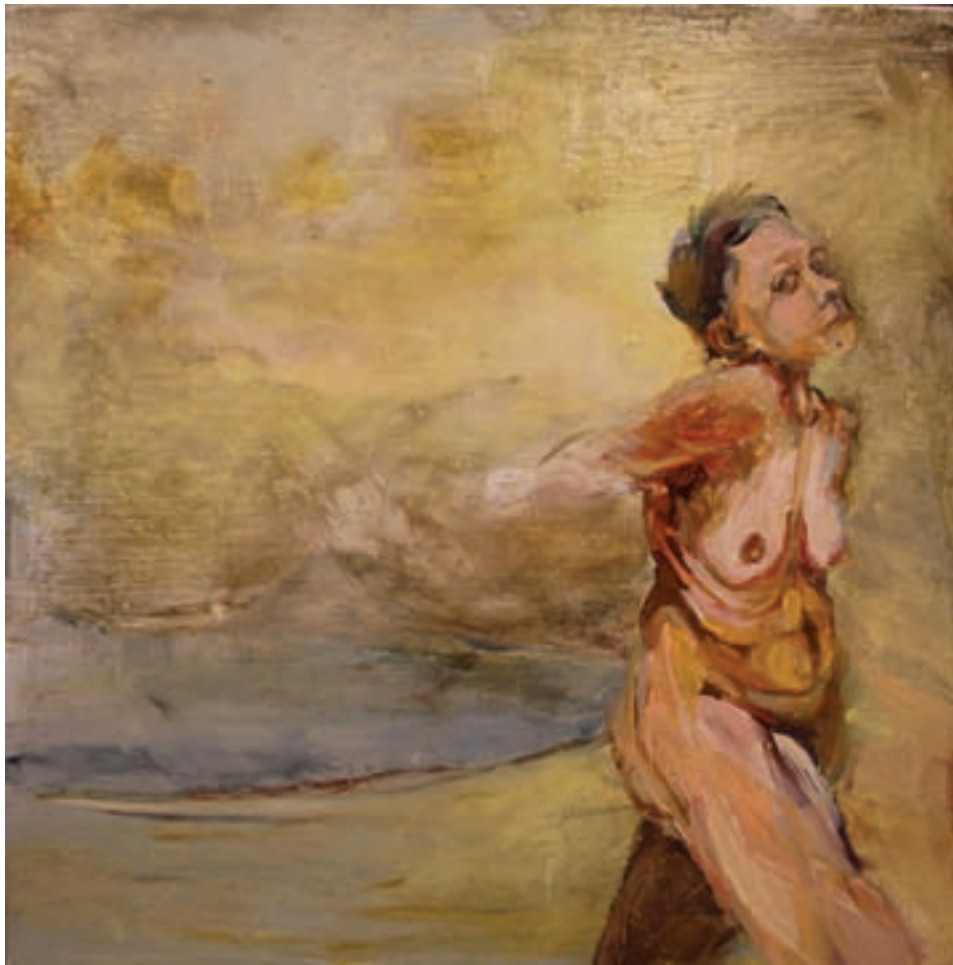
Goodbye, Mr. Browning, Watercolor, 7" x 7", 2008



Dan McAvey (Boston, MA)
Artificial Cherry Flavor, Oil on panel, 6" x 6.325", 2007



Metra Mitchell (St. Louis, MO)
curio, Enamel and oil on board, 6.5" x 6.5" x 1.5", 2008



Metra Mitchell (St. Louis, MO)
cutie, Enamel and oil on board, 6.5" x 6.5" x 1.5", 2008



Adam Mysock (Cincinnati, OH)

Manifest Destiny - Discovering the Swingline, Acrylic on panel, 5.25" x 7", 2008



Adam Mysock (Cincinnati, OH)
Manifest Destiny – Settling for the Facsimile, Acrylic on panel, 5.25" x 7", 2008



Dane Patterson (Brooklyn, NY)

Untitled, Graphite on paper on panel, 4" x 3" x .25", 2004



Brent Payne (Oxford, OH)
Cherry I, Oil on muslin, 5" x 6.75", 2007

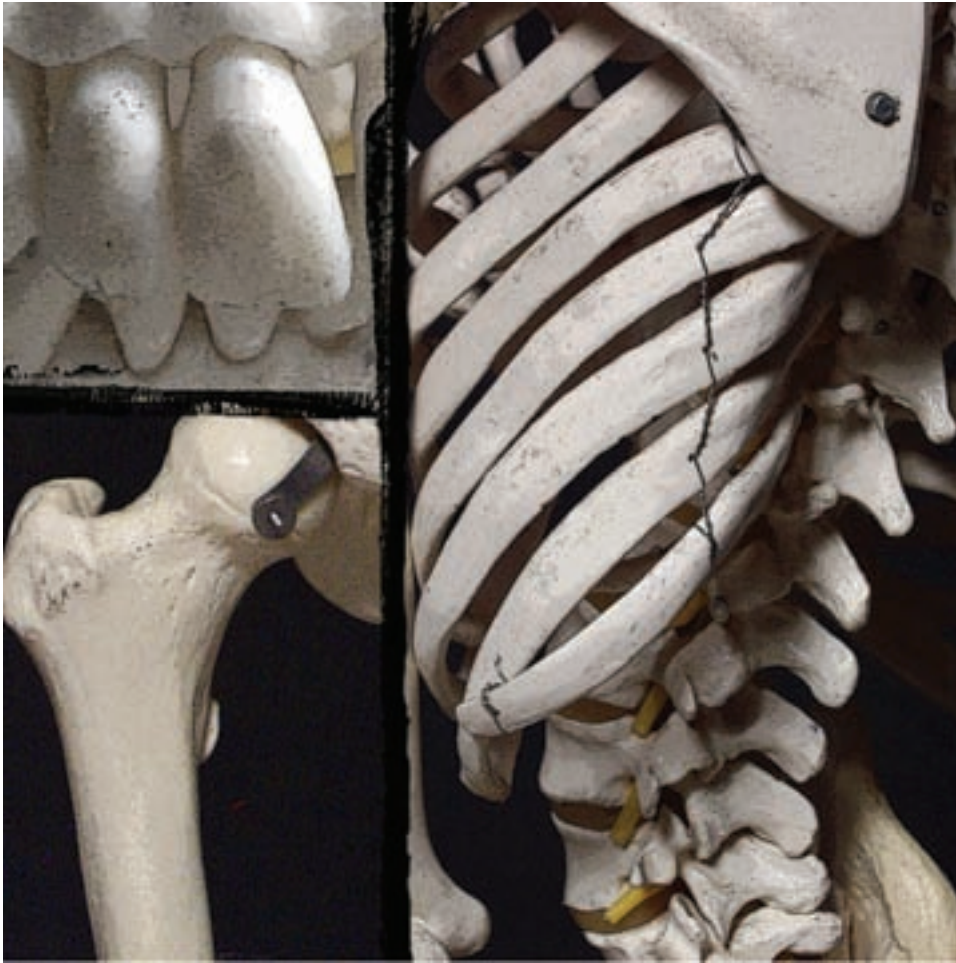


Brent Payne (Oxford, OH)

Two Grapes, Oil on muslin, 3.75" x 6", 2007



Amy Marie Regan (Manchester, NH)
Yellow Chair, Digital photography, 4" x 5", 2007



June Roys (Joplin, MO)

Body of Work 03, Digital photography, digital collage, inkjet, beeswax, 6" x 6" x 3", 2007



June Roys (Joplin, MO)
Body of Work 06, Digital photography, digital collage, inkjet, beeswax, 6" x 6" x 3", 2007



June Roys (Joplin, MO)

Route 66 Typography 04, Digital photography, digital collage, inkjet, beeswax, 6" x 6" x 3", 2007



Michelle Rozic (Nacogdoches, TX)
Decadence 2, Gouache and colored pencil on panel, 2.5" x 5", 2005



Michelle Rozic (Nacogdoches, TX)

Decadence 1, Gouache and colored pencil on panel, 3" x 5", 2005



Liliana Trinajstic (Dublin, Ireland)
Juno, Acrylic on canvas, 7" x 5", 2008





Jovan Villalba (Long Island City, NY)
Sliced 1, Oil on wood panel, 6" x 6", 2008



Lizabeth A. Whipps (Dayton, OH)
Pilots Wanted, Oil on canvas, 5" x 7", 2008



Josh Willis (Brooklyn, NY)
The Procession, Oil on canvas, 6 13/16" x 6 7/8" x 1 3/4", 2007



Josh Willis (Brooklyn, NY)

Death's Little Black Train, Oil on panel, 3 7/8" x 5" x 13/16", 2008



Lisa Wilson, (Oxford, OH)
Untitled, Copper, patina, 5" x 4.5" x 5", 2008

About Manifest

Founded in May of 2004, Manifest Creative Research Gallery and Drawing Center is a 501(c)(3) non-profit arts organization headquartered in the urban neighborhood of East Walnut Hills in Cincinnati, Ohio. The elegant street level exhibition space is minutes away from downtown Cincinnati, and the numerous academic institutions of higher learning in the region. It is also within easy walking distance of a diversely populated historic neighborhood with residents from all walks of life. The galleries are free and open to the public five hours a day, five days a week, presenting works by students and professionals from around the world. The Manifest Drawing Center Studio is located in the nearby Walnut Hills Essex Studios Complex.

Manifest is supported by grants and public donations and has the goal to support student professionalism, integrate the arts into the urban residential community and raise the bar on artistic standards. The mission also includes the exploration of the relationship between art and design, as well as the ongoing support and display of drawing in all its various forms.

Mission Statement:

Manifest enhances the role of art and design in society by cultivating and focusing the transformative power of creativity in the visual arts. Manifest benefits people in the global and local community, including professionals, students, and the public, by creating quality-centered experiences focused on contemporary visual arts and related activities in the context of creative exploration.

Executive Director

Jason Franz

Assistant Director

Tim Parsley

Board of Directors

Katherine Dintenfass

Jason Franz

Tamera Lenz Munte

Brigid O'Kane

Andy Schaub

Manifest Associates

Robert Anderson

Matthew Litteken

Kevin Munte

Trevor Ponder

Kim Shifflett

Matt Wizinsky

Interns

Liz Beard

Laura Fisher (*senior intern*)

Christina Kilbane

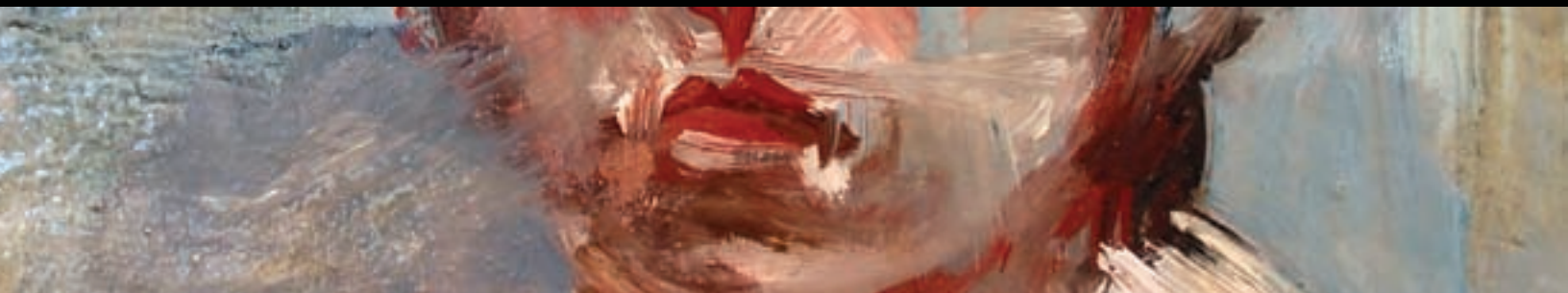
Anna Martinovich (*senior intern*)

Amanda Nurre (*senior intern*)

Elaine Potter (*senior intern*)

Aaron Walker

Melinda Welch





MANIFEST

CREATIVE RESEARCH GALLERY
AND DRAWING CENTER

2727 woodburn avenue cincinnati, ohio 45206
513 861 3638
www.manifestgallery.org